

Proposed Deciduous Trees



Acer campestre
Field Maple



Prunus ilicifolia
Holly leaf cherry



Quercus canariensis
Algerian Oak

Proposed Evergreen Tree



Corymbia fraxifolia
Flowering Gum

Screen Planting



Viburnum odoratissimum
Emerald luster



Syzygium australe 'Aussie Solheim'
Scrub cherry



Pittosporum 'James Stirling'

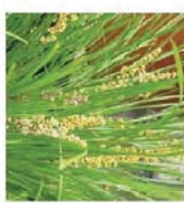
Low Growing Shrubs



Dianella caerulea 'Little Jess'
Blue Flax Lily



Carpobrotus glaucescens
Pigface



Lomandra 'Tanika'
Dwarf Lomandra



KEW STAGE 3B STREETScape		Common Name	Approx mature Height x Width (M)	Installation Size	Per M ²	Qty
Proposed Deciduous Trees						
AC	<i>Acer campestre</i>	Field Maple	3-4 x 3-4	75L	As shown	16
PI	<i>Prunus ilicifolia</i>	Holly leaf cherry	3-4 x 3-4	75L	As shown	12
QC	<i>Quercus canariensis</i>	Algerian Oak			As shown	11
Proposed Evergreen trees						
CF	<i>Corymbia fraxifolia</i>	Flowering Gum			As shown	23
Low Growing Shrubs						
DCL	<i>Dianella caerulea</i> 'Little Jess'	Blue Flax Lily	0.4 x 0.4	150mm	4	548
CG	<i>Carpobrotus glaucescens</i>	Pigface	0.1x0.8	150mm	4	904
LT	<i>Lomandra 'Tanika'</i>	Dwarf Lomandra	0.6 X 0.6	150mm	4	548

© 2008 Site Plans Pty Ltd. A.N. 18 000 061 987. All rights reserved. This drawing is copyright and shall not be reproduced or copied in any form or by any means without the prior written permission of Site Plans Pty Ltd. Any borrower, contractor or other person who uses this drawing without the prior written permission of Site Plans Pty Ltd. shall be deemed to be in breach of the contract of service between Site Plans Pty Ltd and the client. The contractor shall not be held responsible for any errors or omissions in this drawing. The contractor shall be responsible for any errors or omissions in this drawing. The contractor shall be responsible for any errors or omissions in this drawing.

NO.	DATE	DESCRIPTION	BY	CHECKED
1	18/08/2010	ISSUE FOR TENDERS	NA	NA
2	18/08/2010	ISSUE FOR TENDERS	NA	NA
3	18/08/2010	ISSUE FOR TENDERS	NA	NA
4	18/08/2010	ISSUE FOR TENDERS	NA	NA
5	18/08/2010	ISSUE FOR TENDERS	NA	NA
6	18/08/2010	ISSUE FOR TENDERS	NA	NA
7	18/08/2010	ISSUE FOR TENDERS	NA	NA
8	18/08/2010	ISSUE FOR TENDERS	NA	NA
9	18/08/2010	ISSUE FOR TENDERS	NA	NA
10	18/08/2010	ISSUE FOR TENDERS	NA	NA
11	18/08/2010	ISSUE FOR TENDERS	NA	NA
12	18/08/2010	ISSUE FOR TENDERS	NA	NA
13	18/08/2010	ISSUE FOR TENDERS	NA	NA
14	18/08/2010	ISSUE FOR TENDERS	NA	NA
15	18/08/2010	ISSUE FOR TENDERS	NA	NA
16	18/08/2010	ISSUE FOR TENDERS	NA	NA
17	18/08/2010	ISSUE FOR TENDERS	NA	NA
18	18/08/2010	ISSUE FOR TENDERS	NA	NA
19	18/08/2010	ISSUE FOR TENDERS	NA	NA
20	18/08/2010	ISSUE FOR TENDERS	NA	NA
21	18/08/2010	ISSUE FOR TENDERS	NA	NA
22	18/08/2010	ISSUE FOR TENDERS	NA	NA
23	18/08/2010	ISSUE FOR TENDERS	NA	NA
24	18/08/2010	ISSUE FOR TENDERS	NA	NA
25	18/08/2010	ISSUE FOR TENDERS	NA	NA
26	18/08/2010	ISSUE FOR TENDERS	NA	NA
27	18/08/2010	ISSUE FOR TENDERS	NA	NA
28	18/08/2010	ISSUE FOR TENDERS	NA	NA
29	18/08/2010	ISSUE FOR TENDERS	NA	NA
30	18/08/2010	ISSUE FOR TENDERS	NA	NA
31	18/08/2010	ISSUE FOR TENDERS	NA	NA
32	18/08/2010	ISSUE FOR TENDERS	NA	NA
33	18/08/2010	ISSUE FOR TENDERS	NA	NA
34	18/08/2010	ISSUE FOR TENDERS	NA	NA
35	18/08/2010	ISSUE FOR TENDERS	NA	NA
36	18/08/2010	ISSUE FOR TENDERS	NA	NA
37	18/08/2010	ISSUE FOR TENDERS	NA	NA
38	18/08/2010	ISSUE FOR TENDERS	NA	NA
39	18/08/2010	ISSUE FOR TENDERS	NA	NA
40	18/08/2010	ISSUE FOR TENDERS	NA	NA
41	18/08/2010	ISSUE FOR TENDERS	NA	NA
42	18/08/2010	ISSUE FOR TENDERS	NA	NA
43	18/08/2010	ISSUE FOR TENDERS	NA	NA
44	18/08/2010	ISSUE FOR TENDERS	NA	NA
45	18/08/2010	ISSUE FOR TENDERS	NA	NA
46	18/08/2010	ISSUE FOR TENDERS	NA	NA
47	18/08/2010	ISSUE FOR TENDERS	NA	NA
48	18/08/2010	ISSUE FOR TENDERS	NA	NA
49	18/08/2010	ISSUE FOR TENDERS	NA	NA
50	18/08/2010	ISSUE FOR TENDERS	NA	NA

CIVIL ENGINEERS
TGM GROUP PTY LTD
P 03 8822 8833
F 03 88 81 4889
www.tgmgroup.com

ARCHITECTS
Woods Bagot
p 03 9645 6949
p 03 9645 8787

S I T E I . M . A . G . E.
Landscape Architects
East Melbourne VIC 3002 Australia
Phone: (03) 9662 2847
www.landscape.com.au
A&A 1101 010 010

ISSUE TO HERITAGE VICTORIA
Client: Walker Corporation Pty Ltd
Project: MAIN DRIVE KEW
Stage: 3B-Streetscape

Drawing Name: Planting Schedule
Scale: NA
Date: 02-06-2010
Drawn: NM
Checked: NM
Issue Number: SM10-044
Drawing Number: LA03B-10.50/A
DC



KEY

- 1 Restore verandah and paving (Selected tiles with bluestone edging)
- 2 Proposed north-south pathway to historic alignment
- 3 Fire memorial to be located in memorial garden
- 4 Existing tessellated tile and bluestone paving to verandah to be retained (new stair entry to be constructed to approved future detail)
- 5 Sealing walls incorporating residents mosaicque
- 6 Existing Lamp Post to be retained
- 7 Existing Lawn Area to be regraded (retaining wall & existing trees to be removed)
- 8 Existing School Bell to be retained
- 9 Continuation of Quercus canarhensis as per Lower Drive at 15m Centre
- 10 Low Key Native Tree Planting & Associated Carparking
- 11 Gravel paving with Ag pipes
- 12 Continuation of boundary road alignment as pedestrian link
- 13 Existing retaining walls to be retained

LEGEND

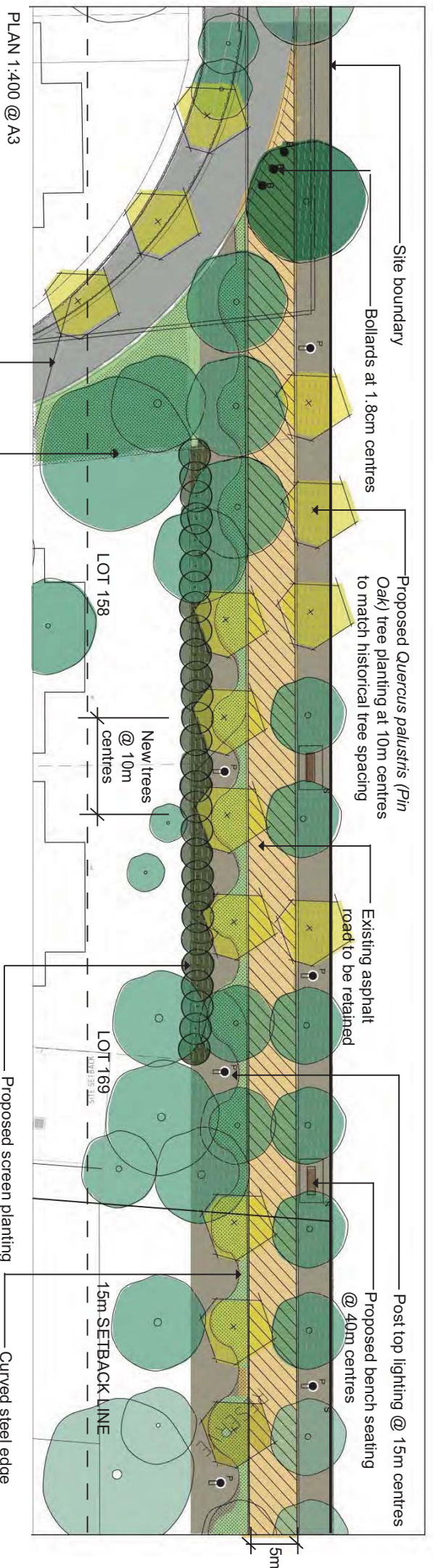
- Existing Tree to be retained
- Proposed Infill tree planting to reflect Historical alignment
- Proposed Deciduous Tree to private courtyard
- Proposed street trees
- Public Open Space
- Publicly visible Private Open Space
- Private Open Space
- Decking
- Gravel Area
- Path reflecting historic alignment (1.5m Width)
- Proposed path



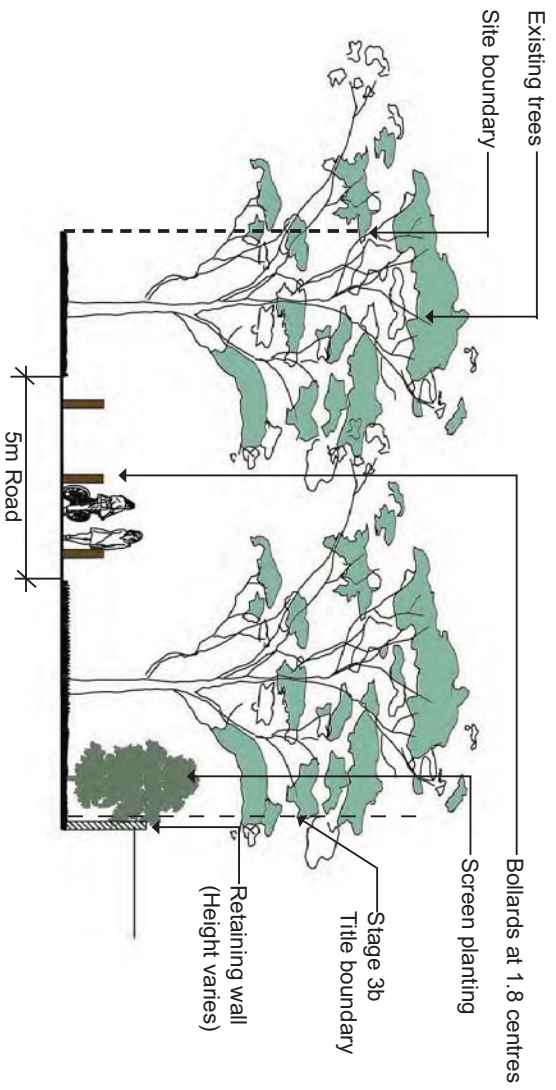
LANDSCAPE MASTER PLAN

**MAIN DRIVE KEW
 STAGE 3B & HERITAGE CORE MASTER PLAN**





Example of lawn with mulch edging and seating in Main Drive



KEY

	Existing trees to be retained
	Proposed trees
	Lawn
	Mulch / curved steel edging
	Existing asphalt road
	New road
	Tall screen planting
	Post top lighting
	Proposed bench seat
	Proposed removable bollards

STAGE 3B BOUNDARY ROAD TREATMENT

